

# Sycamore Ridge ~ Paired Patio Homes

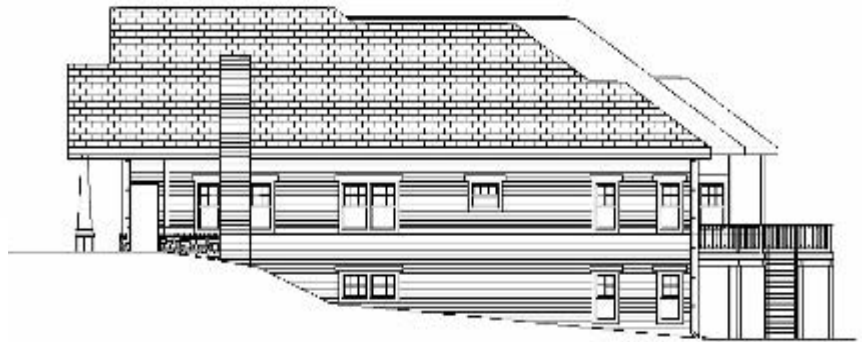
**S**ycamore Ridge at Meadowood, our newest and most exciting living option, is now available with unlimited possibilities for today's active retiree. Located within the 50 acre campus, these paired patio homes will offer finished living space from 1648 to 2030 square feet on the main level plus a full walk-out basement. Enjoy 10 foot ceilings, spacious rooms, wood and ceramic flooring, Whirlpool Energy Star Appliances, gas fireplace, gourmet kitchen, living room with an attached deck and 1.5-2 car garages all nestled in our natural wooded community. Meadowood is conveniently located on the north side of Bloomington, near the IU sports complex. Meadowood offers 260 monthly activities, club house dining, exercise programs with trainer, transportation to and from IU events, snow/trash removal, maintenance free living and no taxes!

This new neighborhood will consist of nine new and meticulously crafted garden homes with wooded lot rear views. Choose from four floor plans: The Brucewood, The Pine Gable, The Crestwood and The Sycamore. Each floor plan will offer many options to fit your lifestyle. Appointments can be made now to discuss building or other living options at Meadowood.

**Now Leasing from \$4200.00**



The Crestwood



**Contact: Director of Marketing & Hospitality Mark Kraner**

**[mark.kraner@meadowoodrc.com](mailto:mark.kraner@meadowoodrc.com)**



# Sycamore Ridge at Meadowood

## The Brucewood Homeplan

## The Pine Gable Homeplan

Main Floor: 2017 sf Garage: 419 sf Main Floor: 1648 sf Garage: 419 sf



## The Crestwood Homeplan

## The Sycamore Homeplan

Main Floor: 2030 sf Garage: 546 sf Main Floor: 1761 sf Garage: 546 sf



**Now Leasing!**

## Contact

Director of Marketing & Hospitality  
**Mark Kraner** (812) 336-7060  
 toll free - (877) 330-4370  
 mark.kraner@meadowoodrc.com

**Meadowood Retirement Community**  
 2455 Tamarack Trail  
 Bloomington, IN 47408

## Meadowood

Retirement Community

(812) 336-7060 [www.meadowoodrc.com](http://www.meadowoodrc.com)



All building areas given are approximations, actual building area determined during construction